

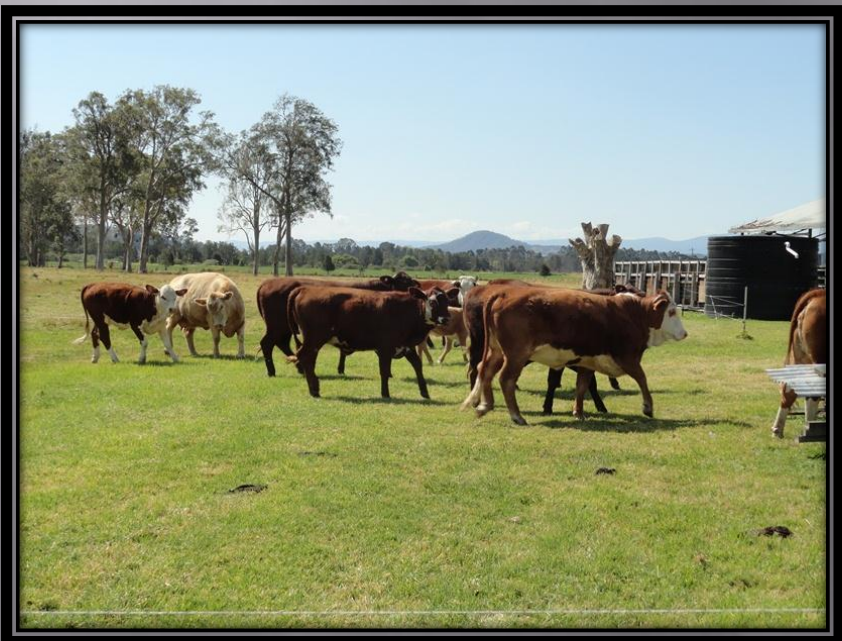
# PRIME RIVER FRONTAGE

*Asking Only ~~\$650,000~~*

**Reduced to \$599,000**

**PRIME GRAZING & CROPPING COUNTRY  
113 ACRES BETWEEN KYOGLE & CASINO**

**\* House, Yards, Sheds, River & Road Frontage \***





A circular inset photograph showing a river with a large, weathered log partially submerged. The water is a murky, greenish-brown color. The background shows a wooded area with some green plants.

**The Richmond River**

A wide-angle photograph of a river flowing through a grassy field. The water is a deep blue color. In the background, there are trees and a clear blue sky. A fence is visible on the right side of the river.

**Clean, Wide and Deep Dam**

A close-up photograph looking down into a well. The well is made of concrete and has a metal pipe leading down. The water inside is very clear and blue. The surrounding area is a light-colored concrete or stone.

**Crystal Clear Well Water**

**Steel Stock Yards**



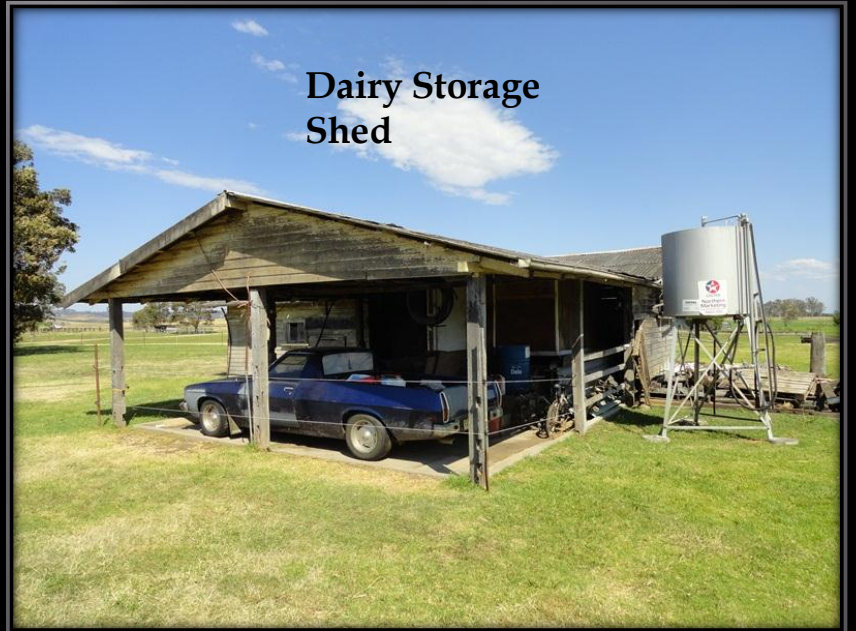
**Steel Stock Yards**

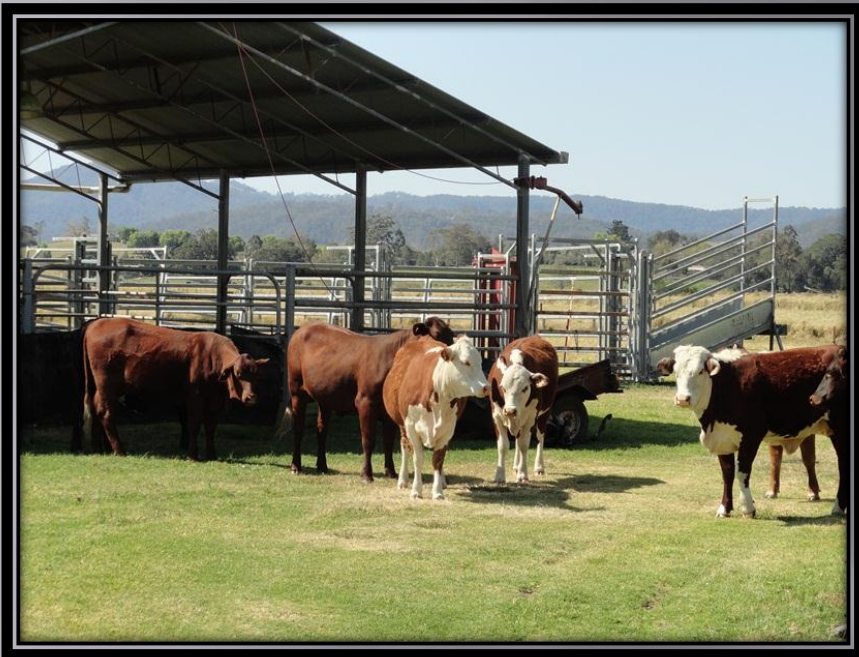


**Steel Machinery  
Shed**



**Dairy Storage  
Shed**







# *"Baraimal" Summerland Way, Kyogle*

This property has long frontage to The Summerland Way and just as long frontage to the Richmond River. Placed perfectly between Kyogle and Casino this excellent cropping and grazing property consists of 113 acres of river bank country. Improvements which are all in very good condition include a 3 to 4 bedroom elevated timber homestead with polished hardwood floors, as new kitchen and bathroom plus heaps of space for the visitors, an open steel machinery shed, steel stockyards and a dairy/storage building. Apart from the long frontage to the Richmond there is a fully equipped well and a very deep dam which is a feature of this property plus rainwater storage. The owner is a reluctant seller but has moved South so the property is for genuine sale and all reasonable offers will be considered. Presently the land is leased for mainly cropping purposes and approx. 20 head of very prime females are agisted. If the property was put back to pasture it could run in excess of 50 breeders without using any irrigation. This is a perfect farm in a perfect position and inspections are by appointment only. Contact Mike Smith 0413300680