

KYOGLE REAL ESTATE

AUCTION

Saturday 28th April 2012 @ 10am

Commercial Hotel Kyogle

a/c Estate of Dianne Martin - Ettrick

954 ETTRICK ROAD (STAPLETON ROAD)

ETTRICK VIA KYOGLE

49.78 Hectares or 123 Acres

Eden Creek Frontage

For an inspection contact: Mike Smith 0413300680 & Mark Rock 0428871477

www.kyogle.com

Eden Creek Frontage



Howard's Creek



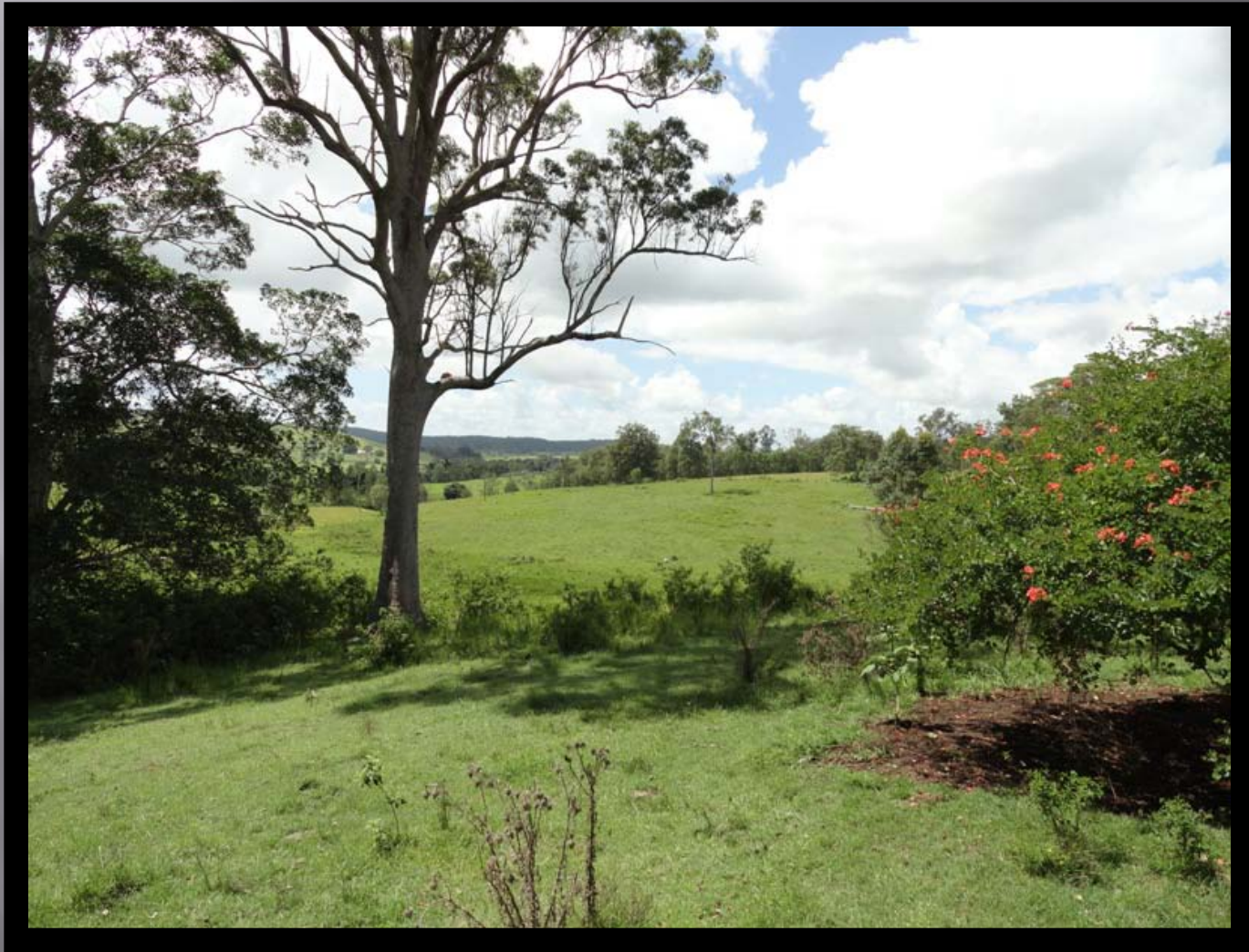
Cattle Crossing



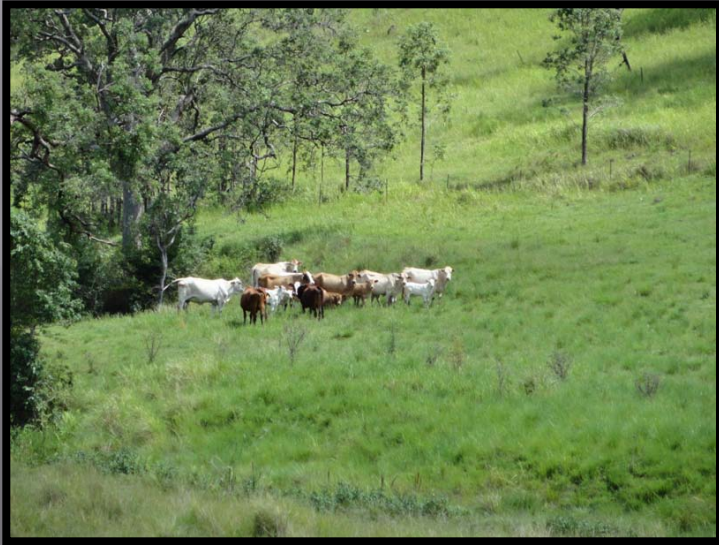
Spring Gully



The Old Home Site



The Valley



Low Rolling Hills



Valley Views



View Towards Creek



Areas of Creek Flat



AUCTION DETAILS

Lot 38 DP755706

Situated at 954 Ettrick Road via Kyogle

- ▣ The property includes 123 acres of grazing land situated only 13 minutes drive from Kyogle. The land is gentle undulating and very cattle country which is watered by Eden Creek and also a spring fed creek called Howard's Creek plus a permanent dam. The property carries over 30 breeders all year round but is also suitable for all types of livestock. There are a couple of very good building sites with power overhead and a school bus on the main road which goes to Kyogle's Primary and Secondary School.