

“Kalimna South” Rivertree NSW

4,274 ACRES – MAGNIFICENT HOMESTEAD – 15 KM'S OF CREEK FRONTAGE
5 Freehold Titles: Lots 4,18 & 28 DP751053 Lot 50 DP751076 & Lot 2 DP610105

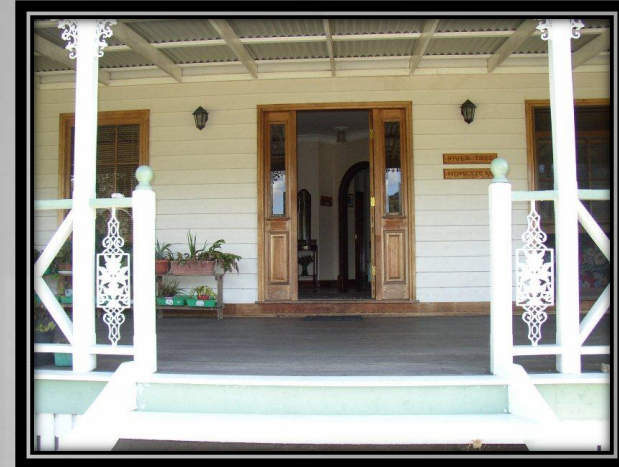


Asking Price of \$2,200,000 – Inspections by appointment only

“Kalimna South” Rivertree NSW



Homestead built in 1996 is fully self sufficient with every modern convenience available



"Kalimna South" Rivertree NSW



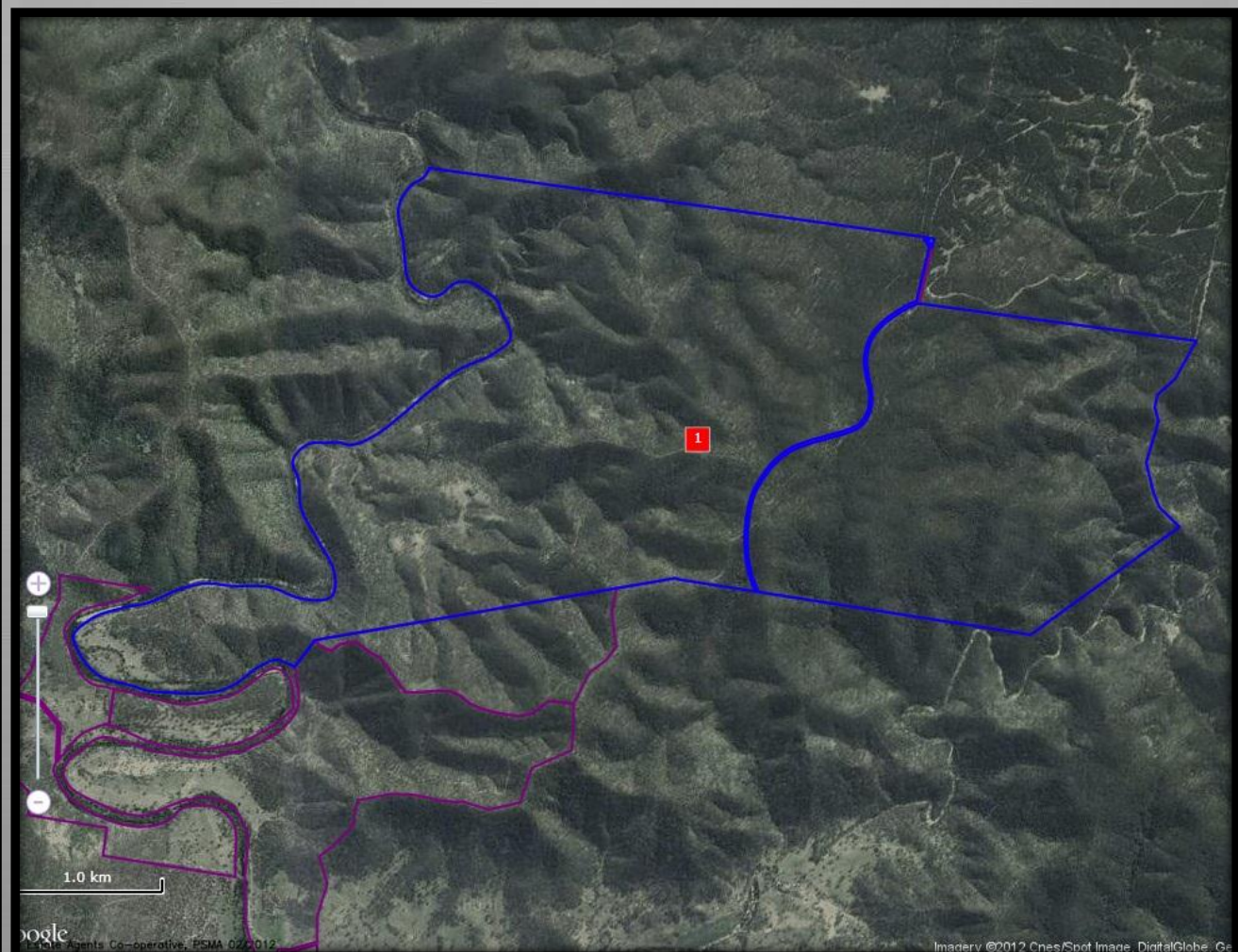
"Kalimna South" Rivertree NSW



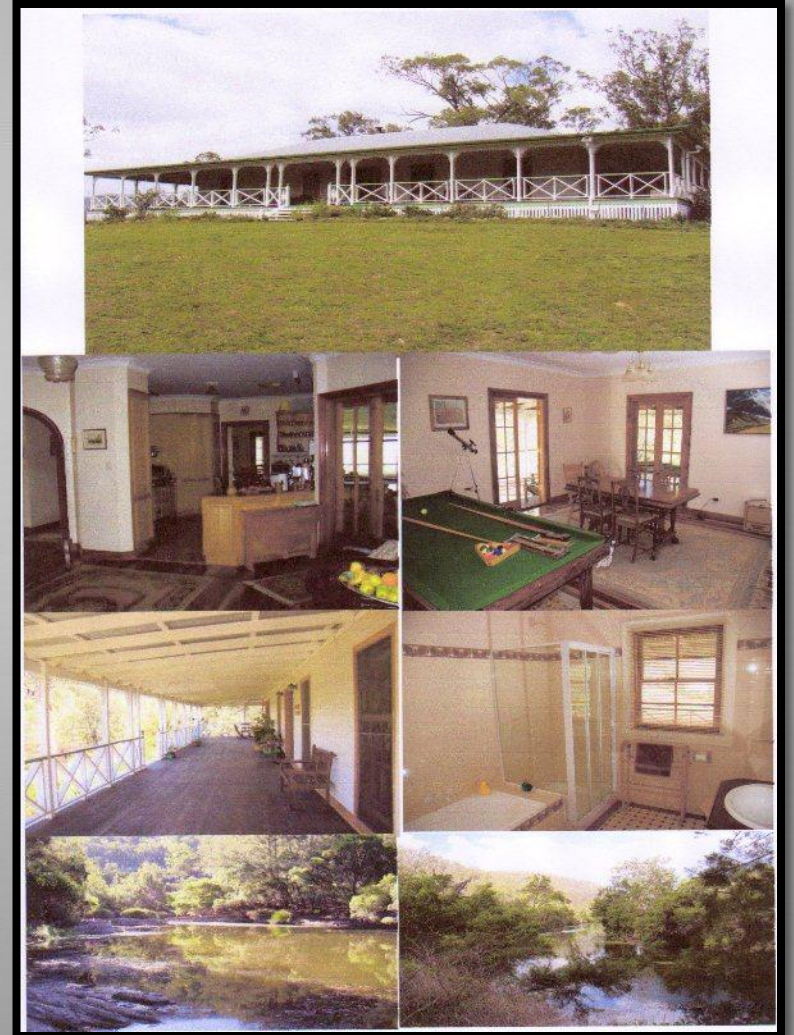
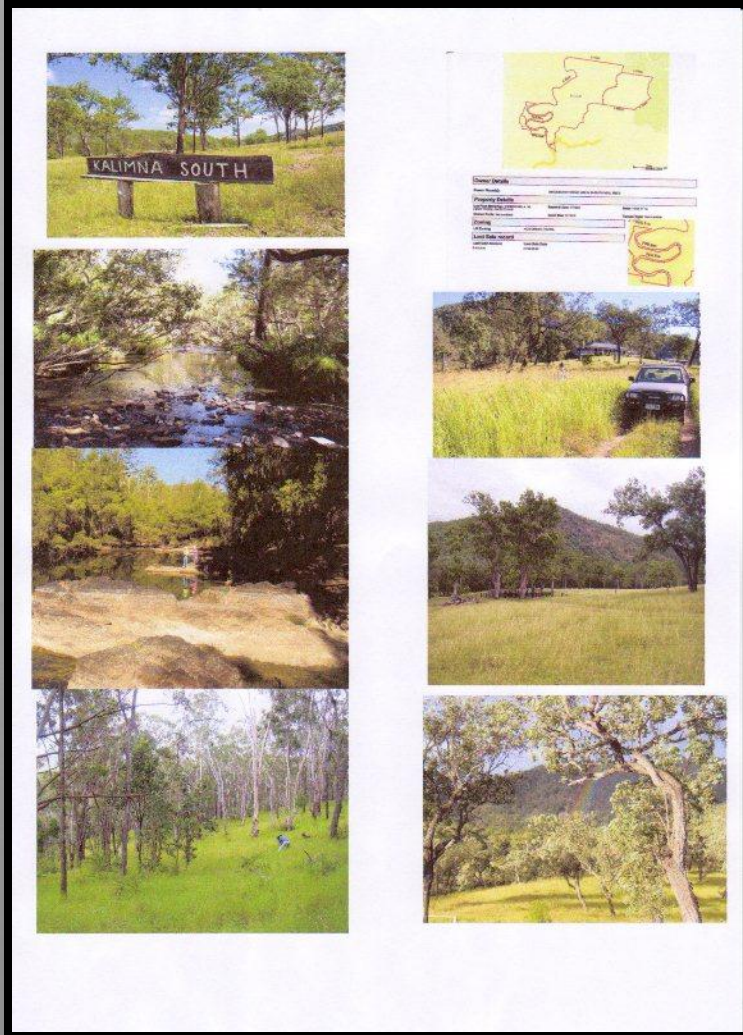
“Kalimna South” Rivertree NSW



“Kalimna South” Rivertree NSW



"Kalimna South" Rivertree NSW



“Kalimna South” Rivertree NSW

Very few large holdings come on the market with approx. 15 km of Creek Frontage. This property lends itself for tourism, four wheel driving, bikes, fishing plus run around 300 head of cattle. Improvements include a Queenslander Homestead built in 1996 but in the 1860 style. There are 12 foot verandas around the whole house and inside there are 3 large bedrooms all with built-ins and the main with an ensuite and walk in robe, 4th bedroom or office, 468 m² of floor area, Tasmanian Oak Kitchen, dining room etc., a true master piece. The house is completely self sufficient i.e. Solar System & Gas plus combustion heating. The homestead over looks what was the old Rivertree Racecourse, which is normally under Lucerne.

Other improvements include 2 Colour Bond Sheds, 2 Sets of Stockyards and 4 x 5000 gallons of rainwater storage.

The land is subdivided into 17 paddocks with most of internal fencing less than 12 years old. The majority of native grasses include Kangaroo Grass in the hills and Microleana along the creek areas with a number of paddocks sown down to improved pastures.

Water: 15km of Koorelah Creek Frontage, Five Snake Creek, Little Cullen’s Creek and 11 dams. Kalimna South has so much potential for eco tourism but on the other hand running livestock and cutting timber is another opinion. The property has an approved Private Native Forest PVP, which expires in 2026 and covers the majority of the land.

Inspections contact Mike Smith 0413300680 or further information Email: mike@kyogle.com