

“AFTERLEE”

EQUESTRIAN & CATTLE PROPERTY
100 ACRES OF LAND



PRICED TO SELL @ \$499,000

Kyogle - North Coast of New South Wales

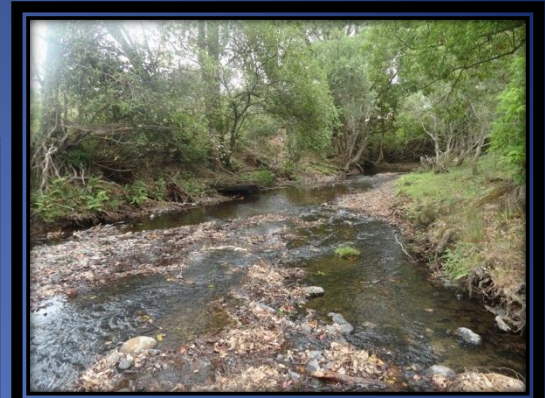
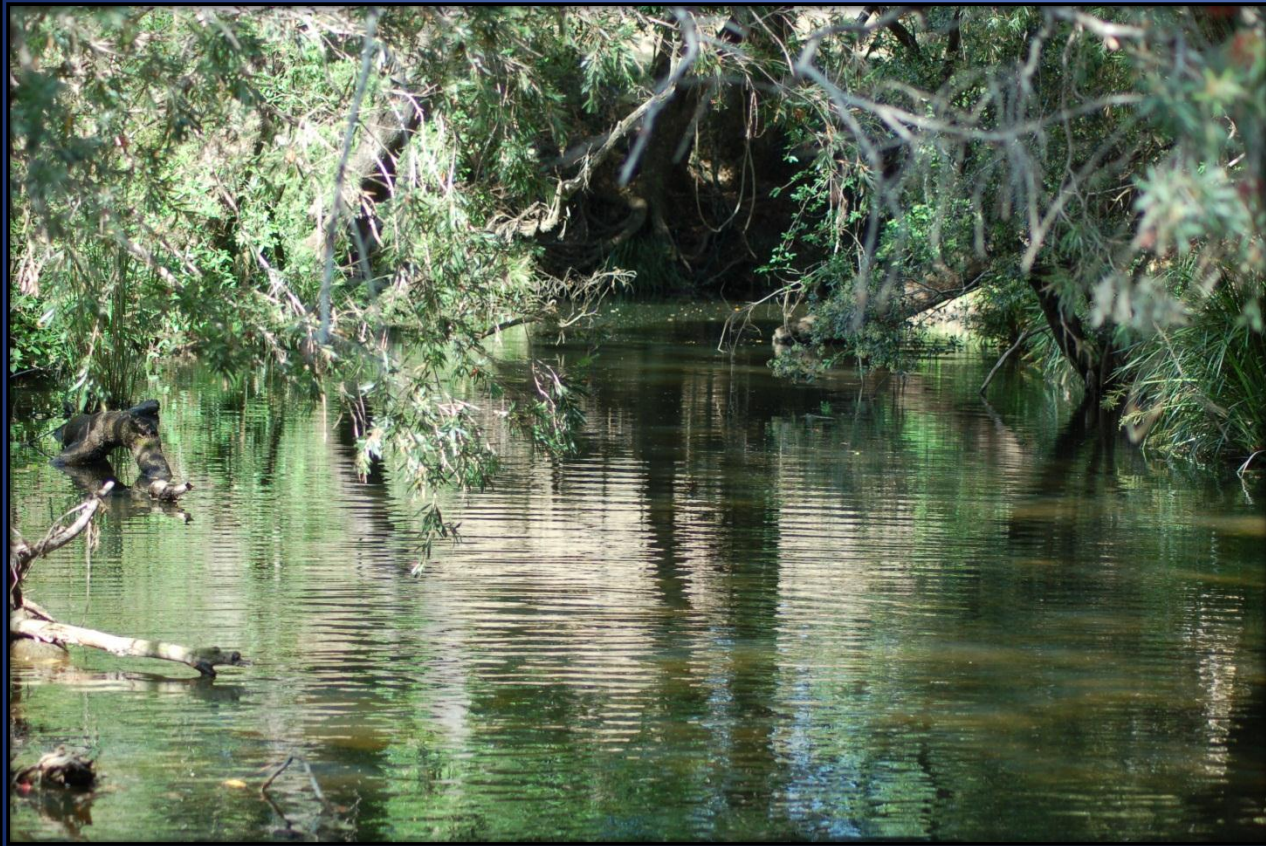
Camp Drafting Arena & Cut Out Yard



Spelling Paddocks



Watered by permanent Creek and 7 Dams



Cob - O - Corn Creek

Dressage Arena – Olympic Size



Horse & Cattle Facilities



Other Improvements



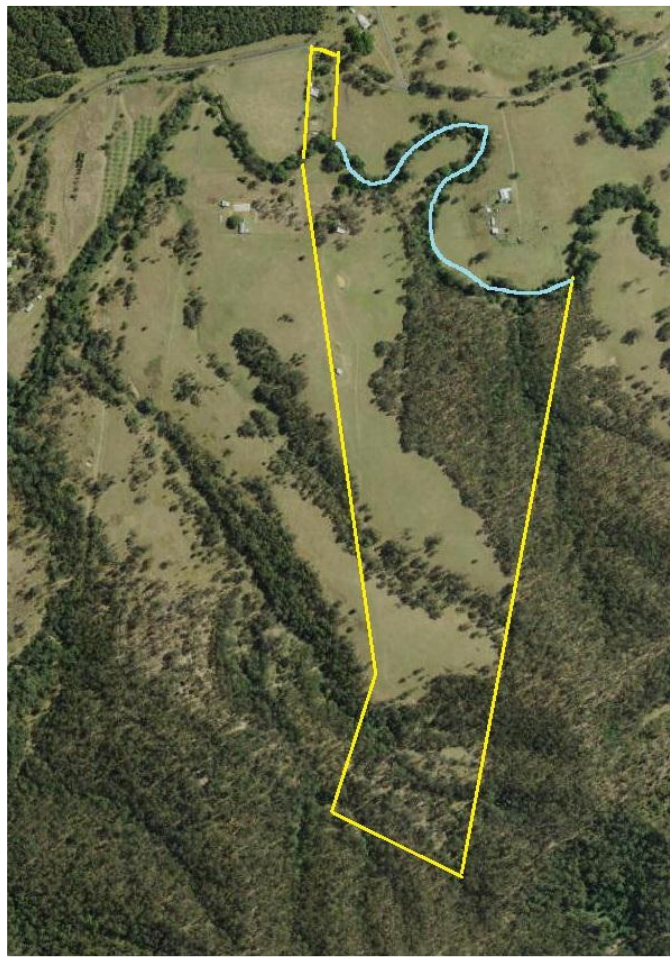
“Homestead” 1391 Afterlee Road Kyogle



“Afterlee” Price \$499,000

- Improvements include a 2 bedroom country homestead with wide veranda's, solar powered hot water system, combustion wood heater, new compressed bamboo flooring, new bathroom, satellite internet connection, additional sleep out and storage room, workshop, chook house and vegie garden
- The property is watered by Cob-O-Corn Creek which runs through the property plus 7 dams and 5 rainwater storage tanks.
- Other improvements include a set of steel stockyards, vet crush, loading ramp, 2 large paddocks, 9mx7m lockup storage shed
- New Horse facilities include: hot and cold wash bay, tack room, professionally built Olympic sized dressage arena, 30mx30m cutting arena, camp drafting camp all sand based, ¾ sized camp draft area, 1 Round yard (Post & Rail), 2 stables 5Mx6M, wood lined, 1 with day yard, 1 self-watered, 2 post and rail day yards with shelter and lined (self-watered), 2 post and rail day paddocks, 4 large high visibility wire horse paddocks. For further information contact Mike Smith 0413300680 or Mark Rock 0428871477

MAPS OF THE PROPERTY



Note: That two closed roads on the property now belong to the property.

