



“KURRAJONG”

UNUMGAR - 1071 ACRES

ONLY \$750,000



1071 ACRES OF NATURAL & PASTURE IMPROVED COUNTRY





KURRAJONG CREEK, SPRINGS, DAMS & NATURAL TIMBERS





WEEKENDER

UNDULATING SLOPES



KIKUYU GRASS

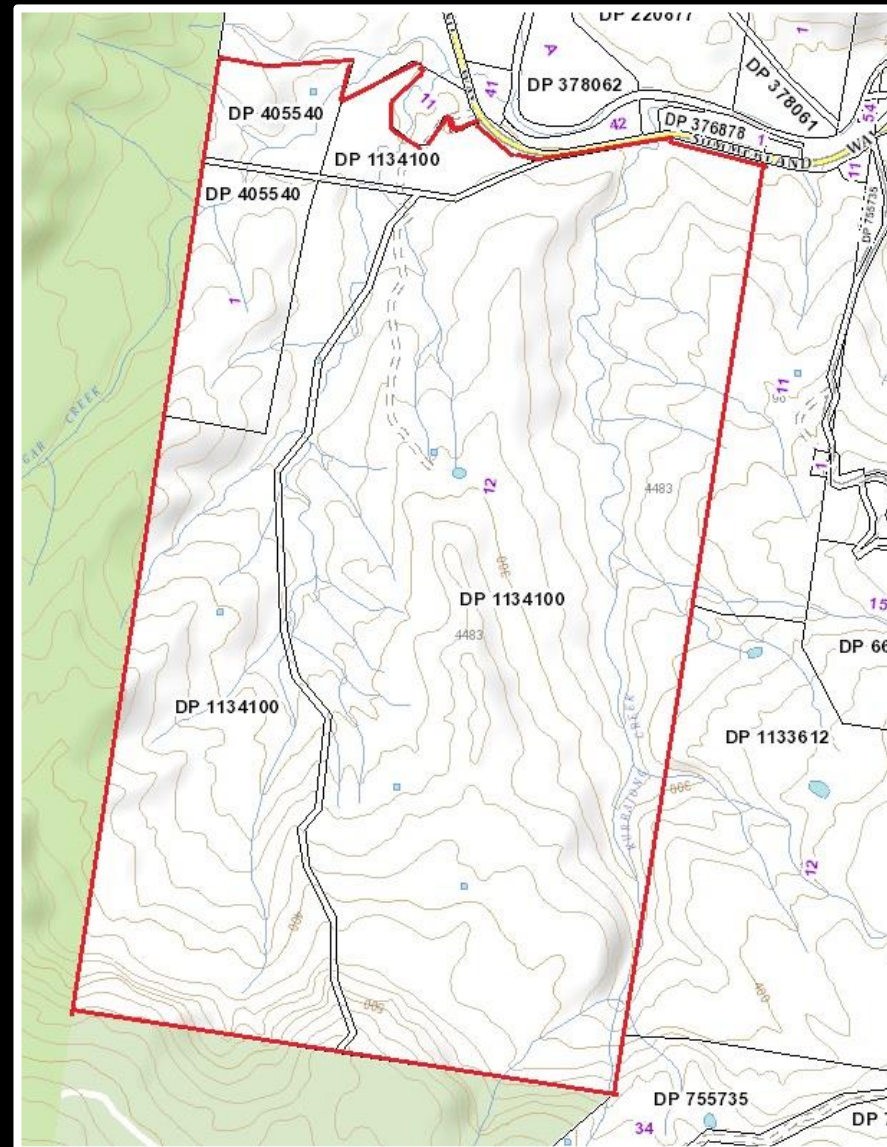
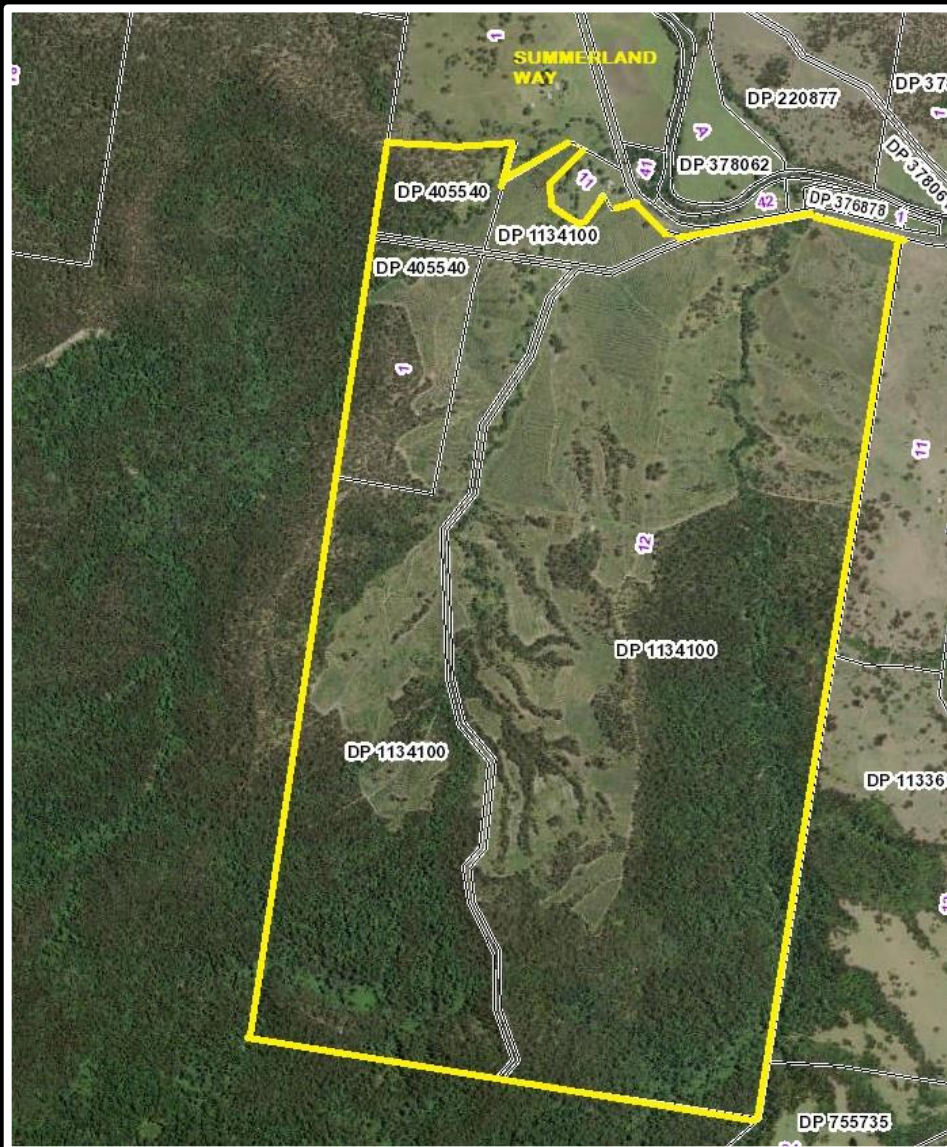
GRAZING RIDGES



CATTLE CAMPS

CONCRETE SLAB READY FOR A SHED





“KURRAJONG”

"KURRAJONG" 1071 ACRES ON 2 TITLES

- * SUMMERLAND WAY FRONTAGE 44KS NORTH OF KYOGLE**
 - * OPEN GRAZING WITH AREAS OF TIMBER**
 - * PREVIOUS OWNER COULD RUN UP TO 140 COWS**
- * LARGE AREAS HAVE BEEN PASTURE IMPROVED WITH RHODES, PASPALUM, CLOVERS WITH NATURAL GRASSES**
- * SENSATIONAL VIEWS OF MOUNT LINDESAY, LEVERS PLATEAU AND OTHER SURROUNDING RANGES**
 - * BORDERS TOONUMBAR NATIONAL PARK**
- * WATERED BY KURRAJONG CREEK, SPRINGS & DAMS**
 - * LIVEABLE WEEKENDER**
- * NUMEROUS SPECTACULAR BUILDING SITES**
 - * ROADS ALL THROUGH THE 1071 ACRES.**

For an inspection please contact Mike Smith on 0413300680